

ESTUDIA EN CANADÁ, ESTUDIA EN LASALLE COLLEGE



LCI EDUCATION
NETWORK



¿Por qué Canadá?



LCI EDUCATION
NETWORK

Alta calidad de vida

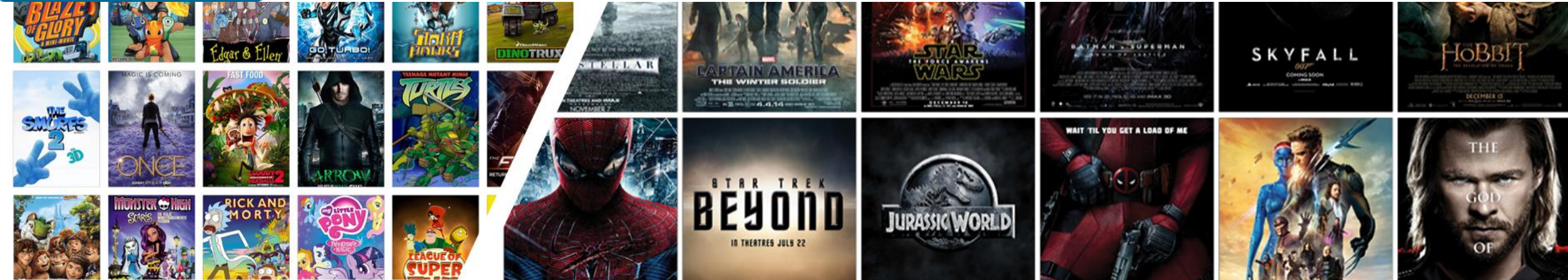


Sociedad segura, amigable, bilingüe y multicultural

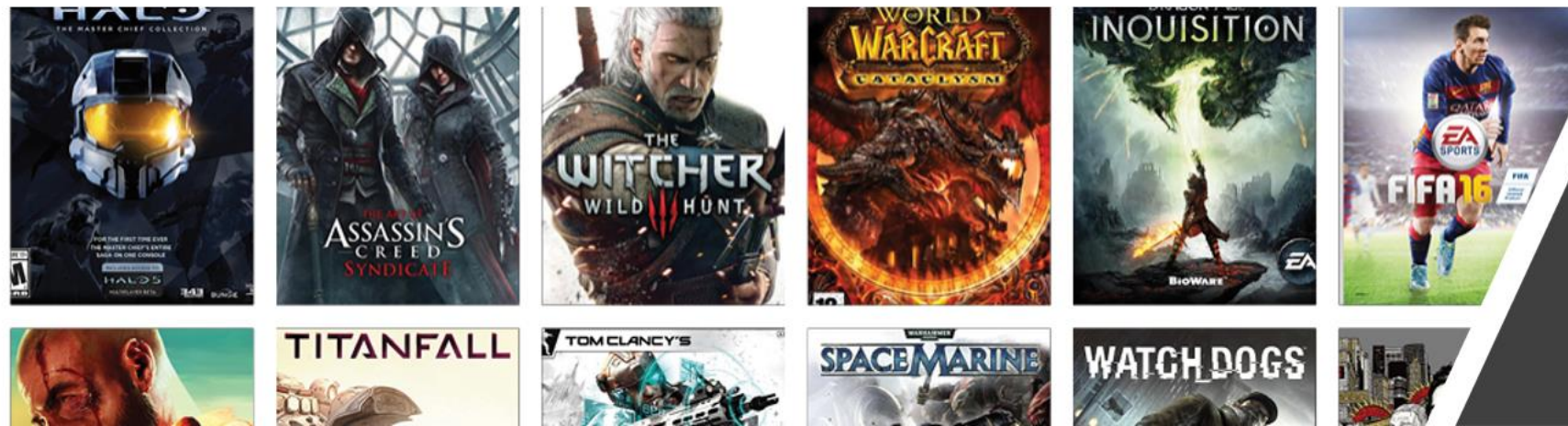


Reconocido mundialmente por la educación de calidad

Tasas de matrícula asequibles y vías hacia la inmigración



Vancouver is an innovation hub
for Films, TV, and Video Games



LaSalle College
Vancouver



Government
of Canada

Gouvernement
du Canada



MENU ▾

[Home](#) > [Immigration and citizenship](#) > [Study in Canada as an international student](#) > [Study permit: About the process](#)
> [Prepare to study in Canada](#) > [Designated learning institutions list](#)

LaSalle College

You are eligible for a post-graduation work permit (PGWP) if you complete one of the degrees below and you meet all other [PGWP criteria](#):

- Bachelor of Design in Graphic Design
- Bachelor of Applied Design in Interior Design
- Bachelor of Science in Game Programming
- Bachelor of Design in Fashion Design

You are not eligible if you complete any other program at this school.



LaSalle College
Vancouver

Bachelor's Degree en LaSalle College Vancouver



LCI EDUCATION
NETWORK



- ✓ Bachelor of Design in Graphic Design
- ✓ Bachelor of Applied Design in Interior Design
- ✓ Bachelor of Science in Game Programming
- ✓ Bachelor of Design in Fashion Design

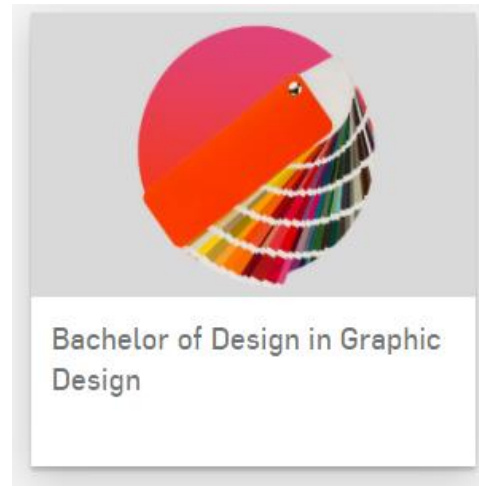
Carreras Universitarias:



LCI EDUCATION
NETWORK



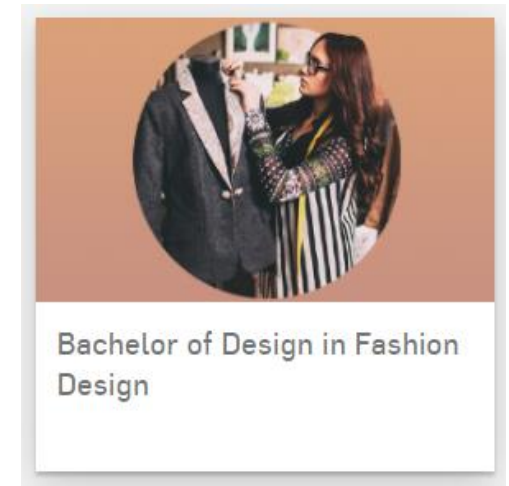
3 AÑOS



3 AÑOS



3 AÑOS



3 AÑOS

PROGRAMAS ELEGIBLES PARA EL PGWP



LaSalle College
Vancouver

★ High opportunity occupation

Computer programmers and interactive media developers (NOC 2174)

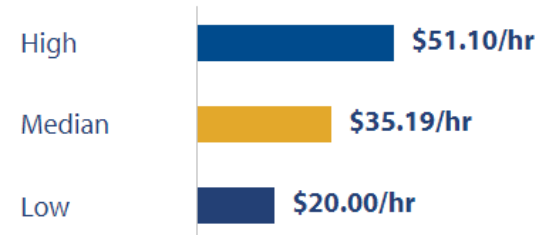
Earnings

Annual provincial median salary

\$73,195**Source:** 2018 Job Bank Wage data

Note: Estimated median employment income based on 2018 Job Bank median hourly wage rate (median annual salary = hourly wage rate x 40 (hours per week) x 52.14 (weeks per year))

Provincial hourly rate

**Source:** 2018 Job Bank Wage Report<https://www.workbc.ca/>

★ High opportunity occupation

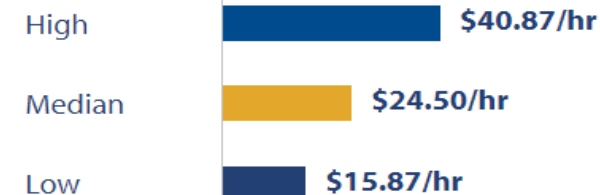
Graphic designers and illustrators (NOC 5241)

Earnings

Annual provincial median salary

\$50,960**Source:** 2018 Job Bank Wage data**Note:** Estimated median employment income based on 2018 Job Bank median hourly wage rate (median annual salary = hourly wage rate x 40 (hours per week) x 52.14 (weeks per year))

Provincial hourly rate

**Source:** 2018 Job Bank Wage Report<https://www.workbc.ca/>

★ High opportunity occupation

Interior designers and interior decorators (NOC 5242)

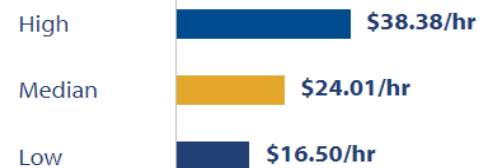
Earnings

Annual provincial median salary

\$50,075**Source:** 2019 Job Bank Wage data

Note: Estimated median employment income based on 2019 Job Bank median hourly wage rate (median annual salary = hourly wage rate x 40 (hours per week) x 52.14 (weeks per year))

Provincial hourly rate

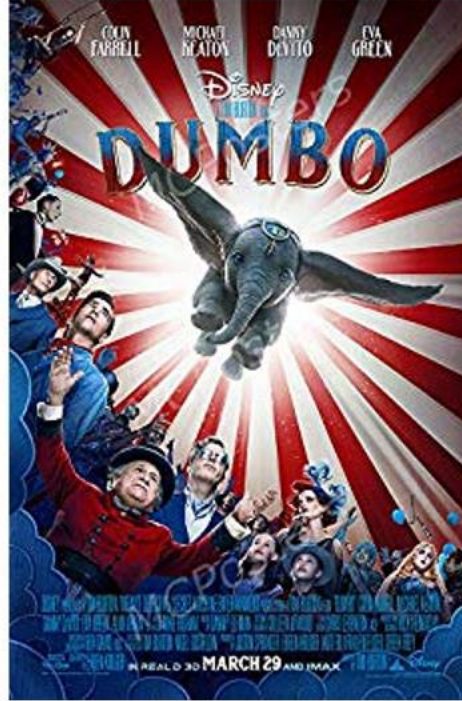
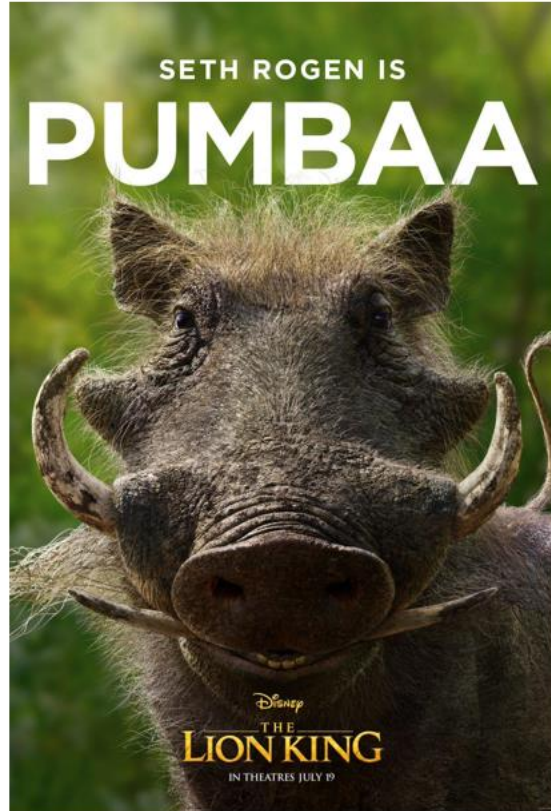
**Source:** 2019 Job Bank Wage Report

<https://www.workbc.ca/>

WHERE OUR GRADUATES WORK



THE ROLE WE PLAY



**Personalized Education
leads to unimaginable things!**

<https://vimeo.com/276098676>

Kurtis Dawe
(3D Modeling, 2010)
Character/Creature Modeler at EA

THE ROLE WE PLAY



**Personalized Education
leads to unimaginable things!**

<https://vimeo.com/288349427>

Nikki Snider
(VFX, 2017)
Compositing Artist at DNEG

THE ROLE WE PLAY



Alex Martinez
(VFX 2013)

<https://vimeo.com/294676788>

MPC

Roto/Paint Lead

Pirates of the Caribbean: Dead Men...

Ghost In The Shell

Wonder Woman

Alien: Covenant

Method Studios

VFX Compositor [SEP] *Christmas Chronicles*

Roto/Paint - Supervisor/Dept. Creative Head [SEP]

Spiderman: Homecoming

Thor: Ragnarok

Black Panther

Roto/Paint Lead [SEP]

Guardians of the Galaxy Vol. 2

Okja

Justice League

Roto/Paint Artist

Allegiant [SEP]

Captain America: Civil War [SEP]

Dr. Strange

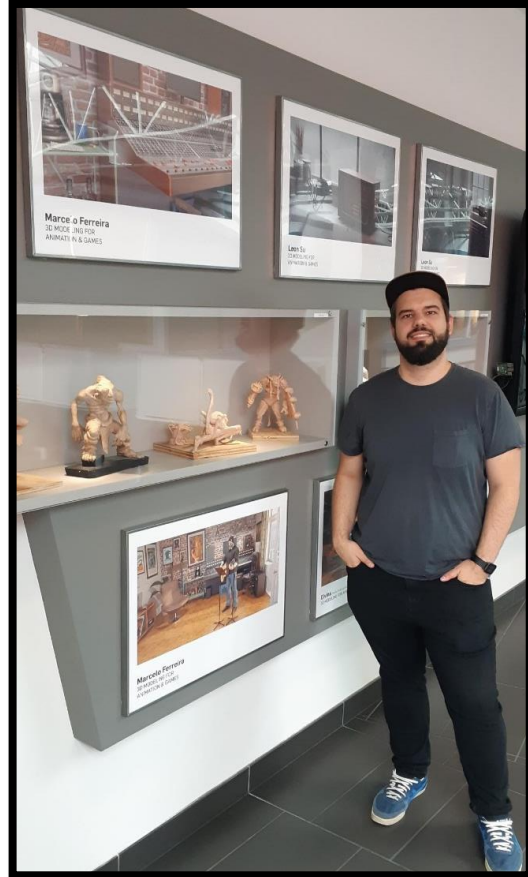
Digital Domain

Roto/Paint Artist

Beauty and the Beast, 2017



THE ROLE WE PLAY



**Personalized Education
leads to unimaginable things!**

Marcelo Ferreira
(3D Modeling, 2018)
Character/Creature Modeler at EA



LCI EDUCATION
NETWORK



lasallevancouver



lasallevancouver



lasallevancouver





LCI EDUCATION
NETWORK



lasallevancouver



lasallevancouver



lasallevancouver



Este año, LCV Alumni fueron parte de todas las 5 películas nominadas por Mejores Efectos Visuales/1917 fue la Ganadora



LCI EDUCATION
NETWORK



lasallevancouver



lasallevancouver





ADMISSIONS REQUIREMENTS

HOW TO APPLY: Applications can be submitted at any time of the year

- ☐ \$150 admissions fee*, a completed and signed application form online or paper
- ☐ A completed and signed enrollment package
- ☐ A minimum 250 words application essay for students applying to a degree program only.
Describe your career goals and how the program can help you to achieve those goals.
- ☐ Proof of secondary school graduation or equivalent is required for admission, except for entry to the Applied Arts Essentials program.
- ☐ A copy of government issued identification
- ☐ Admissions interview via phone or on campus
- ☐ A Photocopy of valid passport
- ☐ A Photocopy of valid Study Permit**
- ☐ Proof of English Language Proficiency***
- ☐ Proof of secondary school graduation in English including official translation if it's not in English

START DATES

Regular Quarter Starts – January, April, July, October

ENGLISH LANGUAGE REQUIREMENTS

Certificates & Diploma

- IELTS (Academic): 5.5
- TOEFL (Internet): 75
- PTE (Academic): 48
- Eiken: 2
- Pearson: 42
- Cambridge: FCE
- TOEIC: 650
- Accuplacer ESL*: 320 composite

Bachelor Degree

- IELTS (Academic): 6.5
- TOEFL (Internet): 80
- PTE (Academic): 58
- Eiken: 2A
- Pearson: 44
- Cambridge: CAE
- TOEIC: 700
- Accuplacer ESL*: 400 composite
- 68 percent in English 12, English Literature 12, English 12 First Peoples, Communications 12 or Technical and Professional Communications 12 or equivalent. Equivalencies can only be determined by the Dean of Academic Affairs.

* Accuplacer ESL can be taken on campus or proctored online.

English for Academic Purposes (EAP):

- IELTS 4.5, Accuplacer exam, ESL partner certificate, or equivalent.





LCI EDUCATION
NETWORK

OPCIONES DE ALOJAMIENTO

LCI Education Network trabaja en conjunto con residencias estudiantiles y casas de familia para que vivas una experiencia completa.

- Soporte 24/7 por parte de nuestro departamento internacional
- Flexibilidad para que hagas tu check in en cualquier momento
- Habitaciones individuales para mejor comodidad





LCI EDUCATION
NETWORK

¡GRACIAS!

987 937 133 📞

trade@canadaperu.org ✉

www.lcieducation.com 🔗